

UV LASER CUTTING MACHINE

(Model : ASIDA -JG16)



USAGE

The machine is used in cutting, opening the window and uncover for CVL/FPC/RF and thin multilayer board, as well as cutting a variety of substrates, such as ceramic, silicon etc.

ADVANTAGE

(1) Precision:

Adopting high-precision linear motor modules, servo control, Sizing Compensate, optical positioning and secondary positioning technologies.

(2) High quality

(a) little carbonization;

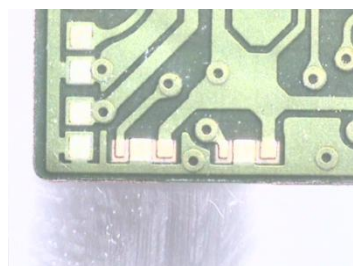
(b)high density graphics cutting.

(3)Highly intelligent, efficient

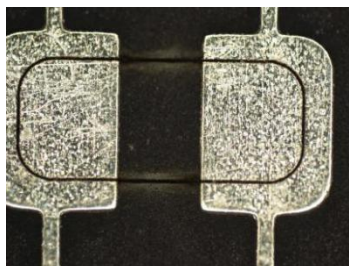
(a)With multi-panels cutting, auto-positioning, auto-correcting, automatically focus, automatic sizing compensation and exclusive cutting previews functions;

(b)JG16 use double working table to save time of feeding and blanking materials.

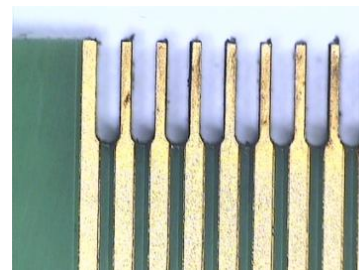
CUTTING EXAMPLE



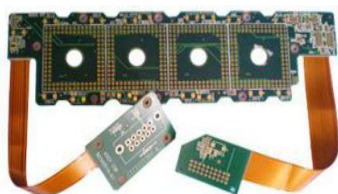
PCB



tin



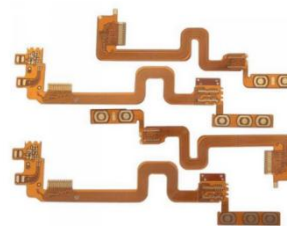
Goldfinger



RF



Cover layer



FPC

TECHNICAL PARAMETER

| Specification of UV Laser Cutting Machine | |
|---|------------------------------------|
| Model | JG16 |
| Wavelength | 355nm |
| Laser Power | Option (Standard 10W) |
| Laser Frequency | 30-120kHz |
| Maximum Processing Size | 500mm x 400mm (Double platform) |
| Maximum Operating Speed | 800mm/s |
| Positioning Accuracy of Table | ±3μm |

| | |
|--|---------------------------------------|
| Repetitive Positioning Accuracy of Table | $\pm 1\mu\text{m}$ |
| Total Accuracy | $\pm 20\mu\text{m}$ |
| light spots | $20\pm 5\mu\text{m}$ |
| Scanning range | 45mmx45mm |
| File Format | *.gbr & *.dxf & *.lay |
| Electric Power Supply | AC220V/2kW; AC380V/5.5kW |
| Dimensions(L x W x H) | 1850mmx1640mmx1650mm |
| Weight | 2400kg |
| Environmental Temperature | $20\pm 2^{\circ}\text{C}$ |
| Environmental Humidity | $\leq 60\%\text{RH}$, Non-condensing |
| Ground Amplitude | $\leq 5\mu\text{m}$ |
| Ground Pressure | $\geq 1000\text{Kgf/m}^2$ |

