

High Speed CO₂ Laser Film-cutting Machine (Model: PIL0806C)



USAGE

The machine is equipped with imported metallic-sealed-off CO₂ laser, natural granite base, imported servo motor, high precision double screw driver gantry structure, and large work table. It is used to cut PET, Acrylic, Aramid fiber, Leather, Paper, Wood, Rubber, Kevlar, Plastic and other non-metallic film materials.

The machine has high processing efficiency, good quality, high accuracy, its performance is much higher than the same kinds of laser machine in the market.

Contact: [Anna](#) Mobile: +86-15017199907 Email: jd02@zhengyee.com Skype: Anna-Peng0628@outlook.com

ADVANTAGE

1. Security and reliability: High security and reliability of marble base as well as fully enclosed design.
2. High speed and high precision: Adopts imported servo motor, the imported guide rail, stationary gantry structure, imported NC system. The machine has good performance with high cutting speed, smooth corner and high stability.
3. Long Using Life: The machine is with long life using the imported metallic-sealed-off CO2 laser.
4. Good Cutting Effect: With excellent optical path design, produce a perfect focus spot, small thermal effect.
5. Convenient Operation: Convenient data processing with dedicated laser cutting software. File formats include DXF, PLT, etc. Interface is simple and friendly, easy operation.
6. CCD can be optional: Auto-finding mark point, work base on the designed graphics and position.



Applied to high-speed precision laser cutting of the screen protective film, acrylic panels, OCA optical adhesive, PET display panel, touch screen, FPC, PCB, electronic paper, diffuser, product logo, digital product, injection molding nozzle, etc.



Logo protective film



Electronic Paper



Display Panel



PET Protective Film



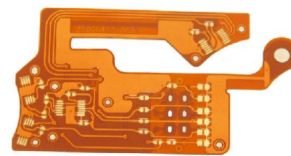
Acrylic



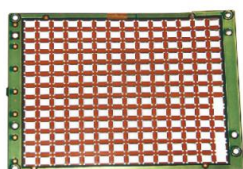
Acrylic Buttons



PP Sheet



FPC



PCB Product Parts



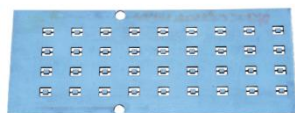
Kevlar



Plastic Mobile phone
Covers



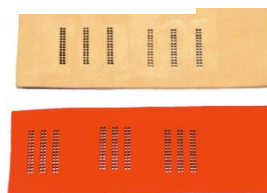
Plastic Digital Product Parts



Rubber Sheet
Leather



Nylon Watch Band



TECHNICAL PARAMETER

Specifications of CO ₂ Laser Cutting Machine			
Model	PIL0806C-30C	PIL0806C-60C	PIL0806C-100C
Laser Type	Imported CO ₂ Laser		
Laser Power	30W	60W	100W
Laser repetition frequency	≤25kHz		
Maximum Processing Size	800mm×600mm		
Worktable Maximum Operating Speed	500mm/s		
Worktable Positioning Accuracy	±0.01mm		
Repetitive Positioning Accuracy of Worktable	±0.005mm		
Total Processing Accuracy	±0.05mm		
Minimum Line Width	0.1mm		
File Format	*.dxf、*.plt		
Electric Power Supply	Three-phase Five-wire System, AC380V 50Hz/3.5kW		
Dimensions(L x W x H)	1470mm×1420mm×1840mm		
Weight	1100kg		
Environmental Temperature	5℃-40℃		
Environmental Humidity	≤85%RH, Non-condensing		
Ground Amplitude	≤5μm		
Ground Pressure	60×10 ³ Kgf/m ²		
Control System	Imported NC System		
Optional Features	CCD automatic positioning/Automatic loading and unloading mechanism		