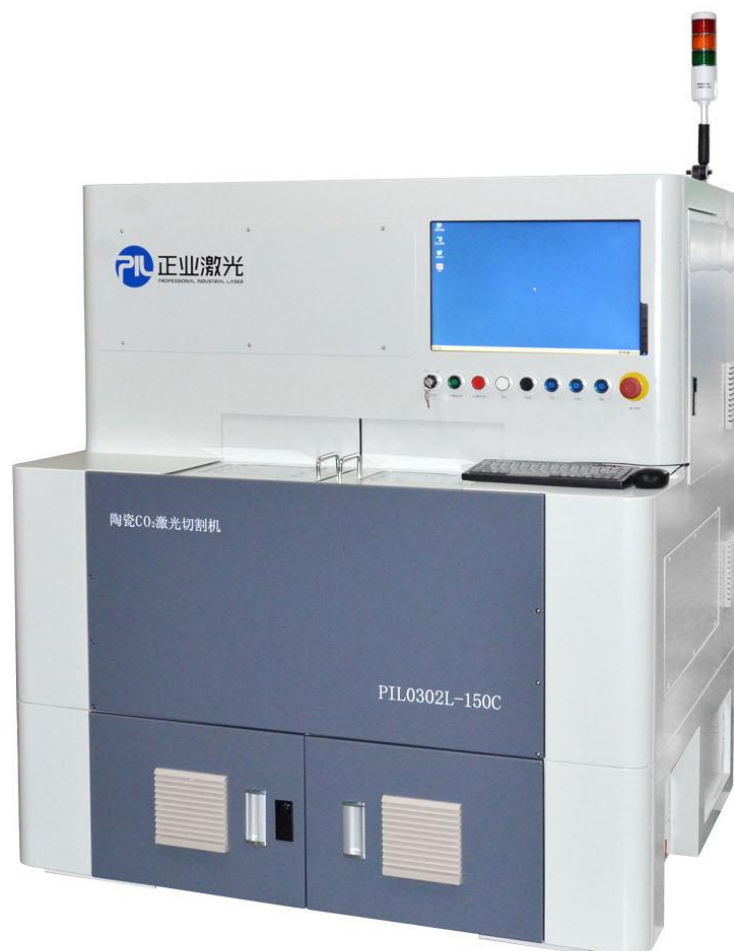


## PIL0302L-150C CO<sub>2</sub> Laser Ceramic Cutting Machine



### USAGE

The machine is equipped with CO<sub>2</sub> laser, natural granite base, imported linear motor, high precision cross worktable structure. It is used for cutting, drilling and scribing of IT products, LED, chemical industry, aerospace industry, alumina, aluminum nitride, zirconia, beryllium oxide and other ceramic materials.



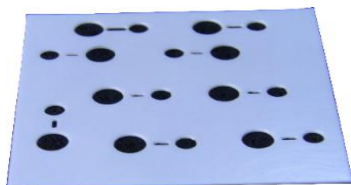
## ADVANTAGE

1. Security and reliability: High security and reliability of marble base as well as fully enclosed design.
2. High speed and high precision: Adopts imported Linear motor, the imported guide rail, cross sliding table structure, imported NC system. The machine has good performance with high cutting speed, smooth corner and high stability.
3. The machine is with long life using the imported metallic-sealed-off CO2 laser.
4. Good cutting effect:: With excellent optical path design, produce a perfect focus spot, small thermal effect, non-contact processing, reduce the damage due to contact stress of ceramics.
5. Convenient Operation: Convenient data processing with dedicated lase cutting software. File formats include DXF, PLT, etc. Interface is simple and friendly, easy operation.
6. CCD can be optional: Auto-finding mark point, work base on the designed graphics and position.

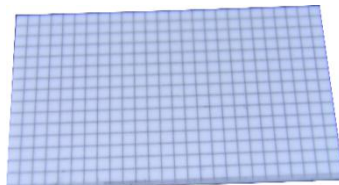


## APPLICATIONS

Applied for IT products, LED, chemical industry, aerospace industry, alumina, aluminum nitride, zirconia, beryllium oxide and other ceramic materials



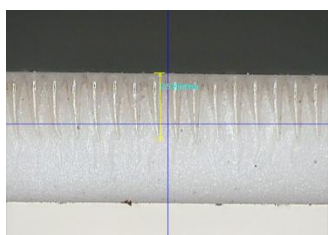
氧化鋯 Zirconium oxide



氧化鋁 Aluminum oxide



氧化鋁 Aluminum oxide



氧化鋁 Aluminum oxide



氧化鋁 Aluminum oxide



氧化鋁 Aluminum oxide



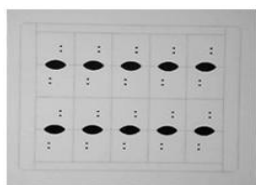
氧化鋯 Zirconium oxide



氧化鋯 Zirconium oxide



氧化鋯 Zirconium oxide



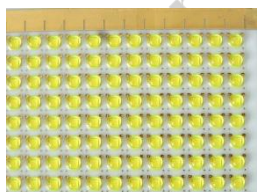
氧化鋁 Aluminum oxide



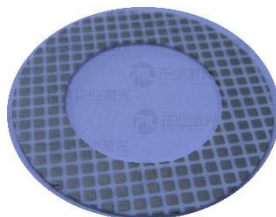
陶瓷 PCB  
Ceramic PCB



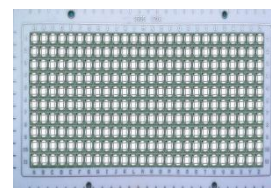
製冷片 Chilling Plate



LED 基板 LED Substrate



製冷片 Chilling Plate



LED 基板 LED Substrate

## TECHNICAL PARAMETER

Specification of CO2 Laser Ceramic Cutting Machine	
Model	PIL0302L-150C
Laser Power	150W
Maximum Processing Size	350mm×250mm
Worktable Maximum Operating Speed	800mm/s
Worktable Maximum Acceleration	10000mm/s <sup>2</sup>
Positioning Accuracy of Table	±0.003mm
Repetitive Positioning Accuracy of Table	±0.001mm
Total Accuracy	±0.03mm
Cutting Thickness	≤1.5mm
Minimum Drilling Diameter	0.1mm
File Format	*.dxf、*.plt
Electric Power Supply	AC380V 50Hz/3.5kW Three-phase Five-wire System, AC380V 50Hz/3.5kW
Dimensions(L x W x H)	1280mm×1060mm×1580mm
Weight	980kg
Environmental Temperature	5℃-40℃
Environmental Humidity	10%-85%RH, Non-condensing
Ground Amplitude	≤5μm
Ground Pressure	60×10 <sup>3</sup> Kgf/m <sup>2</sup>
Control System	Imported NC System
Optional Features	CCD automatic positioning/Automatic loading and unloading mechanism