

Legend Inkjet Printer (LJ101B)



Product name	Legend Inkjet Printer
Brand Name:	ASIDA
Model Number:	LJ101B
Place of Origin:	China
Packaging Details:	Wooden Carton

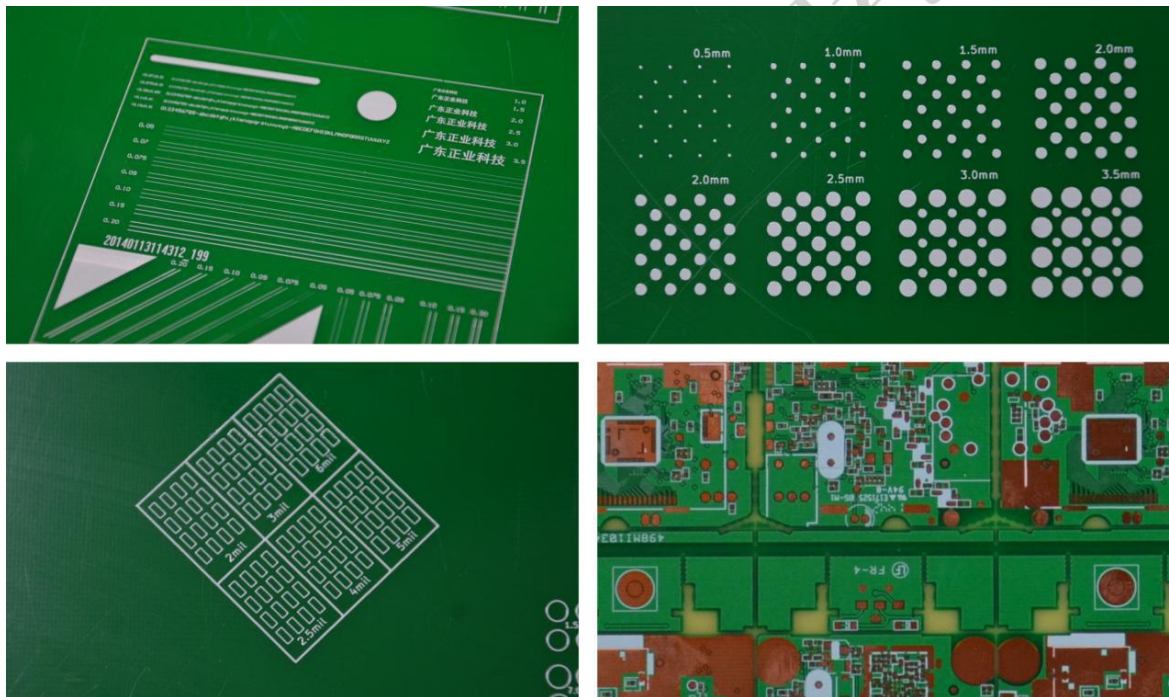
USAGE

The equipment is used in processing of character printing on PCB, which replaced of the traditional screen printing to provide a high-precision, high-quality and efficient characters production solutions for PCB manufacturers.

CHARACTERISTICS

- 1, High precision: Adopt special precision linear motion guide modules, servo control, multi- points positioning and compensation technology;
- 2, High-quality: high definition printing characters; strong adhesion;
- 3, High efficiency: Using high-performance LED-UV ink curing systems, the curing time is short; bi-directional print technology allows a substantial increase in production efficiency; linear motor technology ensures accurate bidirectional printing, making it a practical solution.
- 4, User-friendly: the double printing platform options for different print media, and is well prepared for the coming new ink printing technology.

SAMPLES



TECHNICAL PARAMETER

Specification of Legend Inkjet Printer	
Model	LJ101B
Accuracy	Positioning Accuracy: $\pm 35 \mu m$
	Repeat Accuracy: $\pm 5 \mu m$
Quality	Resolution: 720dpi x720dpi ~1440dpi x1440dpi
	Minimum Line Width: $75 \mu m \sim 90 \mu m$
	Minimum Character Height: 0.5mm
Speed	If PCB's size 350mm x 450mm : (a)Two-way quickly mode:120 side per hour (b)Two-way production mode: 78 side per hour (c)Two-way high-definition mode: 47 side per hour
Objects	Circuit board size: 610mm x 600mm (24"×23")
	Circuit board thickness: 0~6mm (20~236 mil)
Dimensions (L×W×H)	1680mm x 1940mm x1460mm (not including computer)
Weight	1350Kg



广东正业科技股份有限公司
 GUANGDONG ZHENGYE TECHNOLOGY CO.,LTD.