

## Hole Checker JK5200



Product name	Hole Checker
Brand Name:	ASIDA
Model Number:	JK53200
Place of Origin:	China
Packaging Details:	Wooden Carton

### USAGE

The machines are suitable for steps after PCB drilling and before PCB packaging, detecting the number of holes, hole diameter and quality (such as plug hole, foreign bodies, trough long and short defects), and make OK / NG judgment automatically.

### Features

#### 1 Precise

Adopting high-precision CIS scanning system, automatic positioning, image processing and detection technologies.

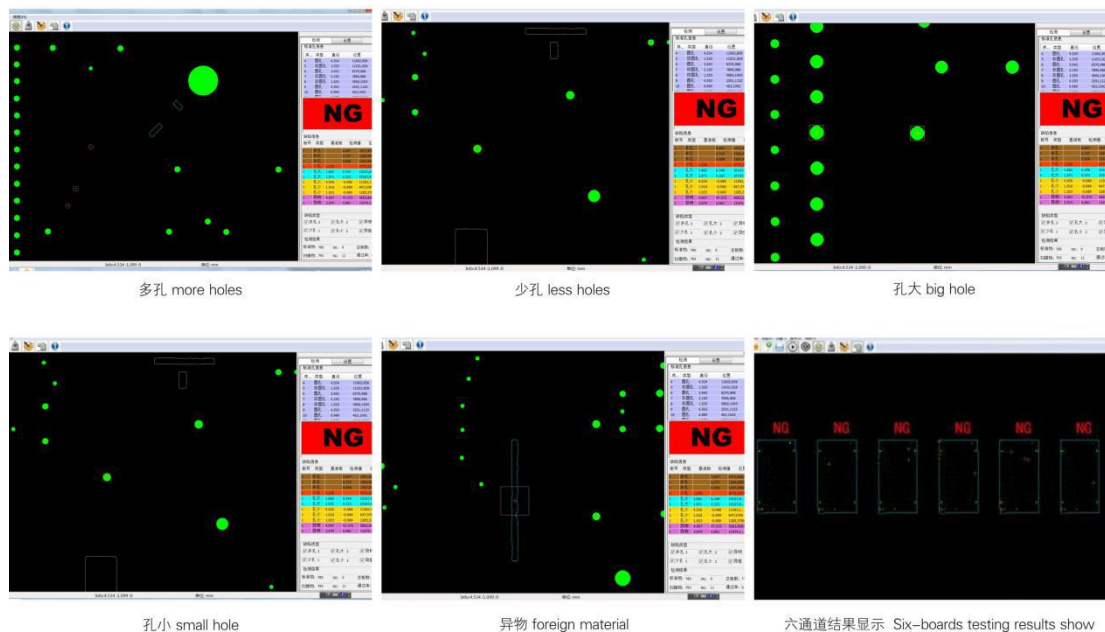
#### 2.Efficient:

(a)Equipped with double sorting equipment, which can detect two plates at the same time.

### 3.Characteristics

With network maintenance function, it can use several terminals to view NG board defect information synchronously, and to overhaul the NG board rapidly.

#### Examples:



## SPECIFICATIONS

Specifications of Hole Checker	
Model	JK5200
Accuracy	Repeat Accuracy: $\pm 30 \mu\text{m}$
	Measurement accuracy: $\pm 20 \mu\text{m}$ (hole diameter $\leq 1\text{mm}$ ) ; $\pm 30 \mu\text{m}$ ( $1\text{mm} \leq \text{hole diameter} \leq 4\text{mm}$ ) ; $\pm 40 \mu\text{m}$ ( $4\text{mm} \leq \text{hole diameter}$ ) ;
Inspection Speed	After drilling :3m/min、6.5m/min、8m/min; Final Inspection:6.5m/min、8m/min、10m/min、12.5m/min
Object	Hole diameter: 0.10mm~10mm
	Size of Circuit Boards: 80mm×100mm~630×650mm
	Thickness Range of Circuit Board: 0.3mm~10mm
	Hole Margins: $\geq 0.10\text{mm}$
Dimensions (L×W×H)	3510mm x 1160mm x1100mm
Weight	About 800Kg



广东正业科技股份有限公司  
 GUANGDONG ZHENGYE TECHNOLOGY CO.,LTD.