

X-ray Inspection Machine XG3300A



Product name	X-ray Inspection Machine
Brand Name:	ASIDA
Model Number:	XG3000A
Place of Origin:	China
Packaging Details:	Wooden Carton

USAGE

The instrument is used in detecting and measuring positioning holes on the PCB to check deviation between layers

ADVANTAGE

1 Precision

- (a) Adopting sealed micro X-ray tube and high-quality imaging system.
- (b) Take a variety of image processing and measuring techniques.

2. Efficient

Real-time observation, directly visual observe inspect target through the lead glass, red light positioning.

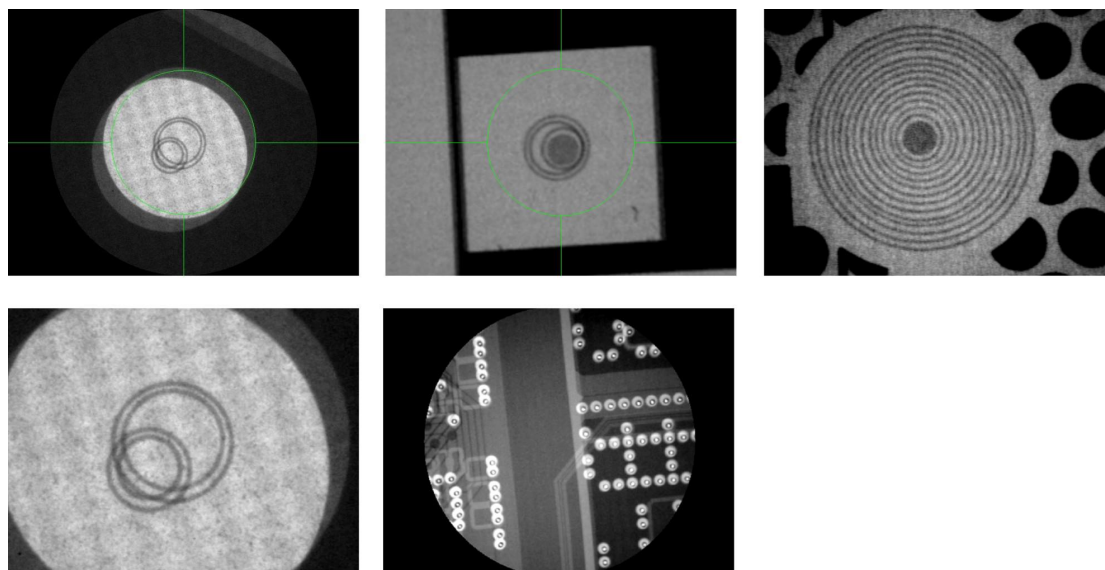
3.Safety

Taking Triple protection technology (sealed micro focus X-ray tube, semi-enclosed lead protective structure and double-lead rubber protective curtain).

STANDARD-COMPLIANT

- 1.JB/T5054, JB/T5055-2001 mechanical design Standard;
- 2.EN13861-2002 ergonomic requirements;
- 3.GB18871-2002 Ionizing Radiation Protection and safety of radiation sources basic standards;
- 4.GB19517-2004 electrical safety requirements;
- 5.IPC-A-600G board Acceptable quality specifications requirements.

TEST SAMPLES



SPECIFICATIONS

Specifications of X Ray Inspection Machine		
	Model	XG3000A
Accuracy	Measuring accuracy	30 μ m
	Resolution	17-25 lp/mm
	Observation target exactly	
Efficiency	15~3 PCS/min	
	Object	≤ 22 layers of PCB
	Copper foil thickness	1/3 ~ 20 oz
	Radiation leak	$\leq 0.5 \mu$ SV/h
	Dimensions	1040 mm *855 mm*1510 mm(Including computer)
	Weight	130Kg



广东正业科技股份有限公司
 GUANGDONG ZHENGYE TECHNOLOGY CO.,LTD.